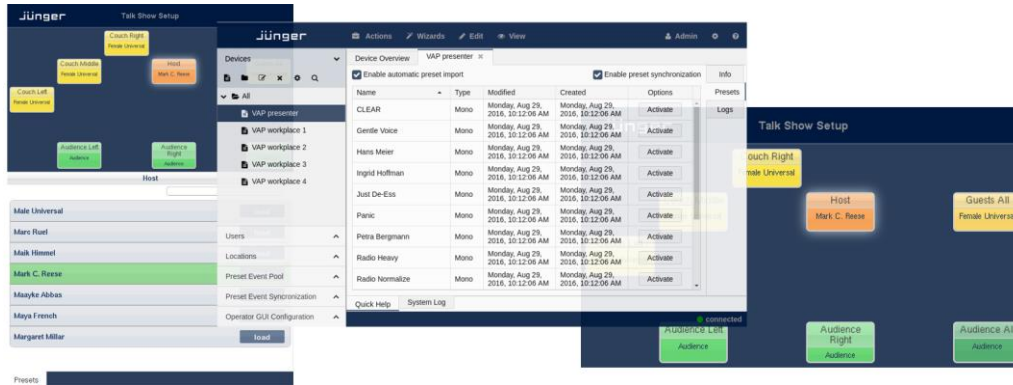


J*AS – Administration Surface

This service application enables centralized device monitoring and preset sharing within an IP network.



Overview

The Jünger Administration Surface makes presets accessible across the network and offers valuable metadata for system administration.

Preset Sharing

J*AS is built to work as a layer above Jünger Audio's powerful preset and event management system. Personalized settings and profiles from any connected D*AP4 VAP can be stored on the server and shared with other devices by the push of a button.

Centralized presets automatically appear in a remote section incorporated in the familiar D*AP4 VAP mobile UI and can be activated instantly. It is further possible to load presets by user log-in, RFID or NFC tag authentication.

Centralized Monitoring and Administration

J*AS features a simple user interface for device configuration and administration. It facilitates system service staff's daily work by displaying all devices at once in a well laid-out overview window. Technical statuses and metadata can be checked and verified at a glance. For trouble shooting, J*AS receives and stores the system logs of all connected devices.

Accessible, Redundant and Flexible

As a flexible multi-platform server application, J*AS can run on virtually any computer. Ranging from a single laptop to multi device server installations for redundancy. Like all other current Jünger Audio products, J*AS is operated via web interface using a standard web browser, anywhere within your network.

Key Features

Global preset storage and sharing

- Presets can be saved and managed on a centralized server
- Every stored preset can be activated instantly on all connected D*AP4 VAP devices
- Presets may be activated by user log-in or NFC card authentication

Accessibility, redundancy and multi-platform flexibility

- Operated via web interface from anywhere within the network
- Automatic fail-over mechanism when run on multiple machines
- Automatic database backup
- Compatible to MS Windows, Mac OS X, Linux and Unix

Centralized device monitoring

- Access to status and technical metadata of all connected devices
- Access to all device's error logs